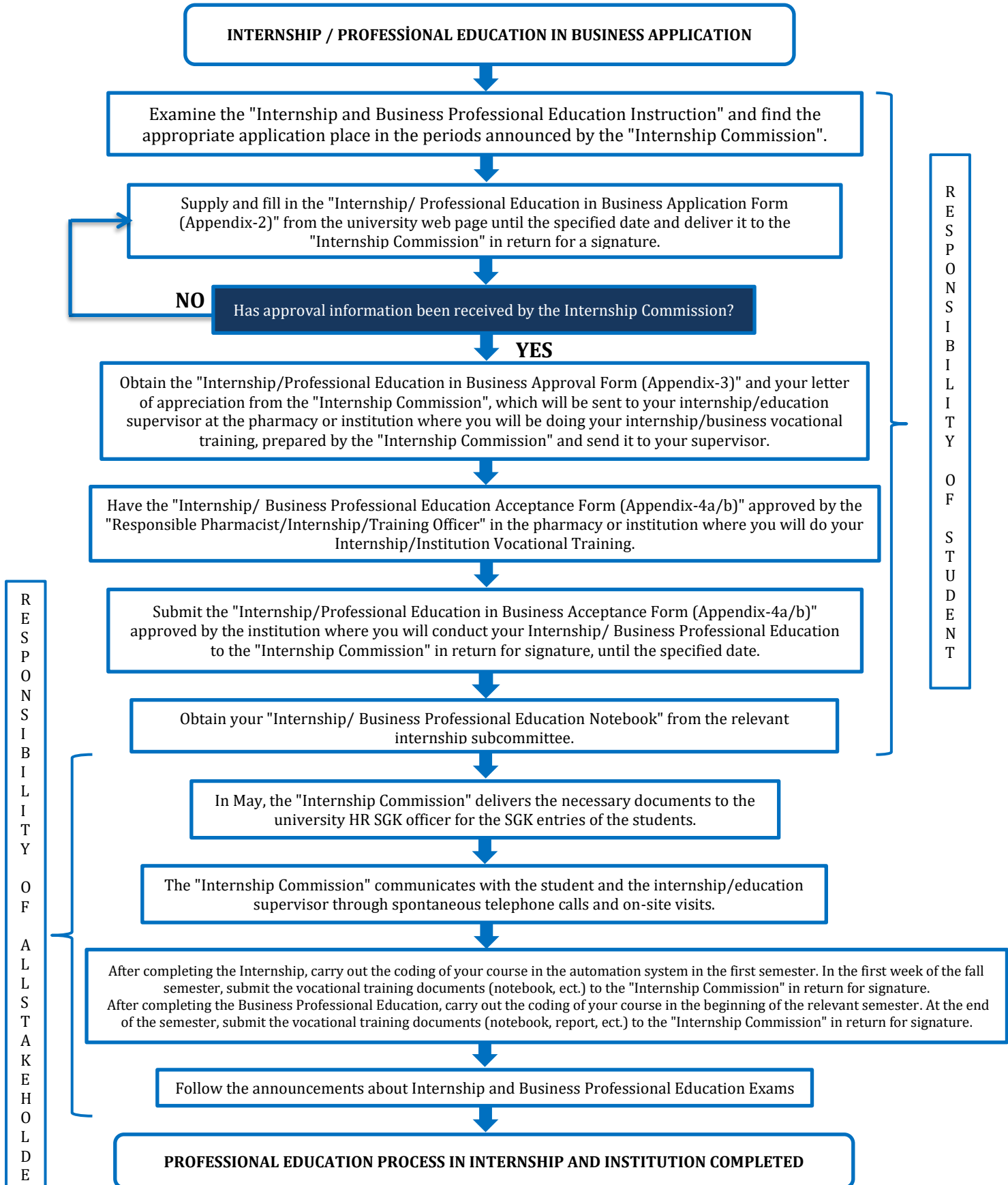


**ACIBADEM MEHMET ALİ AYDINLAR UNIVERSITY
FACULTY OF PHARMACY
PROFESSIONAL EDUCATION PROCESS FLOW CHART IN INTERNSHIP AND
BUSINESS**



*Internship: Refers to all summer internships.

**There may be differences in the timing processes of Internship and Institution Vocational Training Practices.

***After the Evaluation of Internship/Institution Vocational Training, the grades of the students from their applications (PHAR 293, PHAR 393, PHAR 493) are entered into the automation system at the end of the following fall semester.